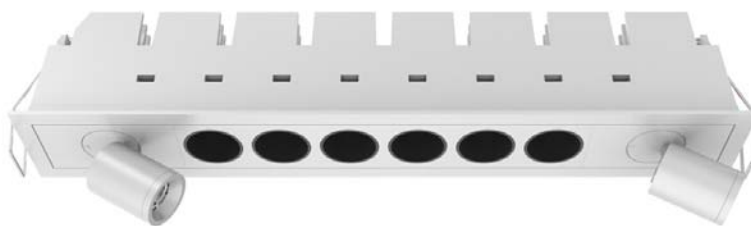

LED Downlight FUSION Series LE-FF6-FS2-17W-830-40D
Black



Light Output Ratio:	100.0%	
Luminaire Power:	19.91 W	
SHR Nominal:	0.50	Calculated using the TM5
SHR Maximum:	0.60	fine grid method.

C Range: 0 - 360DEG
C Interval: 15.0DEG
Test Speed: HIGH
Temperature: 25.3DEG
Operators: Meng Yongjian
Test Date: 2017-06-14

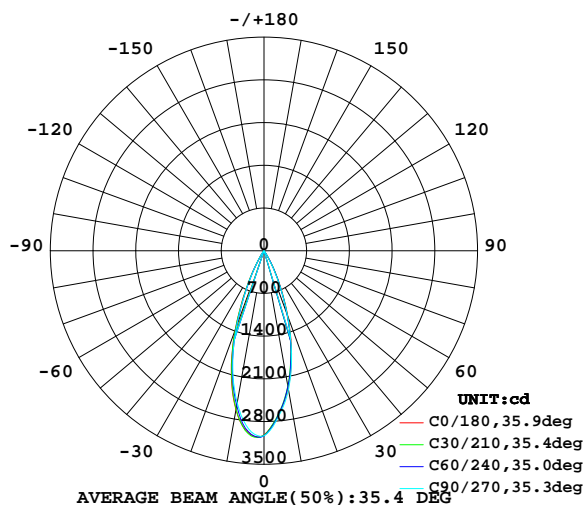
γ Range: 0 - 90DEG
 γ Interval: 1.0DEG
Test System: EVERFINE GO-2000B_V1 SYSTEM V2.0.288
Humidity: 52%
Test Distance: 5.850m [K=1.0000]
Remarks:

LUMINAIRE PHOTOMETRIC TEST REPORT

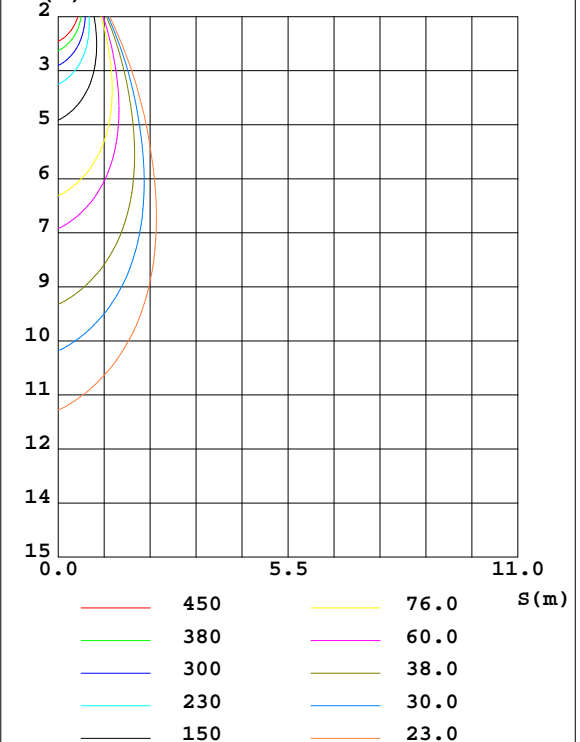
Test:U:220.7V I:0.0902A P:19.91W PF:0.9561 Lamp Flux:1139.05x1 lm		
NAME: FF6-FS2-17W-830-40D Black	TYPE:Downlight	SERIAL No.:
SPEC.:3000K	DIM.: L290mm*W45mm*H60mm	
MFR.:		

DATA OF LAMP		PHOTOMETRIC DATA Eff: 57.22 lm/W			
MODEL	CREE-3000K	I _{max} (cd)	3061	S/MH(C0/180)	0.60
NOMINAL POWER(W)	20.0	LOR(%)	100.0	S/MH(C90/270)	0.59
RATED VOLTAGE(V)	220	TOTAL FLUX(lm)	1139.0	η UP,DN(C0-180)	0.0,47.5
NOMINAL FLUX(lm)	1139.05	CIE CLASS	DIRECT	η UP,DN(C180-360)	0.0,52.5
LAMPS INSIDE	1	η up(%)	0.0	CIBSE SHR NOM	0.50
TEST VOLTAGE(V)	220	η down(%)	100.0	CIBSE SHR MAX	0.60

LUMINOUS INTENSITY DISTRIBUTION DIAGRAM



C0 PLANE ISOLUX DIAGRAM (UNIT:lx)



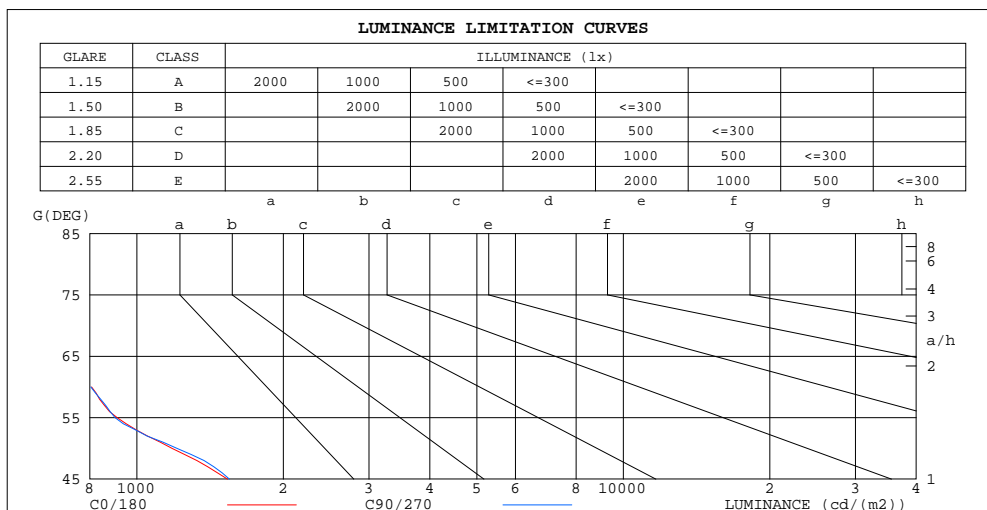
C Range: 0 - 360DEG
C Interval: 15.0DEG
Test Speed: HIGH
Temperature:25.3DEG
Operators:Meng Yongjian
Test Date:2017-06-14

γ Range: 0 - 90DEG
γ Interval: 1.0DEG
Test System:EVERFINE GO-2000B_V1 SYSTEM V2.0.288
Humidity:52%
Test Distance:5.850m [K=1.0000]
Remarks:

ZONAL FLUX DIAGRAM AND LUMINANCE LIMITATION CURVES

ZONAL FLUX DIAGRAM:

γ	C0	C45	C90	C135	C180	C225	C270	C315	γ	Φ zone	Φ total	Φ lum, lamp
10	2283	2261	2311	2420	2645	2597	2534	2432	0- 10	258.2	258.2	22.7,22.7
20	1148	1124	1119	1185	1385	1313	1314	1241	10- 20	508.3	766.5	67.3,67.3
30	234.2	228.5	198.6	209.2	261.9	237.6	245.6	255.4	20- 30	295.2	1062	93.2,93.2
40	21.83	21.25	20.92	22.89	30.07	28.72	27.67	24.65	30- 40	50.79	1113	97.7,97.7
50	9.908	10.02	10.14	11.84	13.25	13.49	12.74	11.31	40- 50	12.82	1125	98.8,98.8
60	5.266	5.164	5.246	5.676	6.120	5.965	5.977	5.637	50- 60	7.062	1132	99.4,99.4
70	2.458	2.614	2.760	3.081	3.410	3.358	3.331	2.886	60- 70	4.252	1137	99.8,99.8
80	0.7424	0.7578	0.8452	1.005	1.140	1.123	0.9935	0.8580	70- 80	1.874	1139	100,100
90	0.0568	0.0568	0.0547	0.1071	0.1574	0.1246	0.0437	0.0437	80- 90	0.4787	1139	100,100
100									90-100			
110									100-110			
120									110-120			
130									120-130			
140									130-140			
150									140-150			
160									150-160			
170									160-170			
180									170-180			
DEG	LUMINOUS INTENSITY:cd									UNIT:lm		



LUMINANCE cd/(m ²)		
G(°)	C0/180	C90/270
85	209	307
80	328	373
75	395	427
70	551	618
65	705	718
60	807	804
55	911	902
50	1181	1209
45	1535	1550

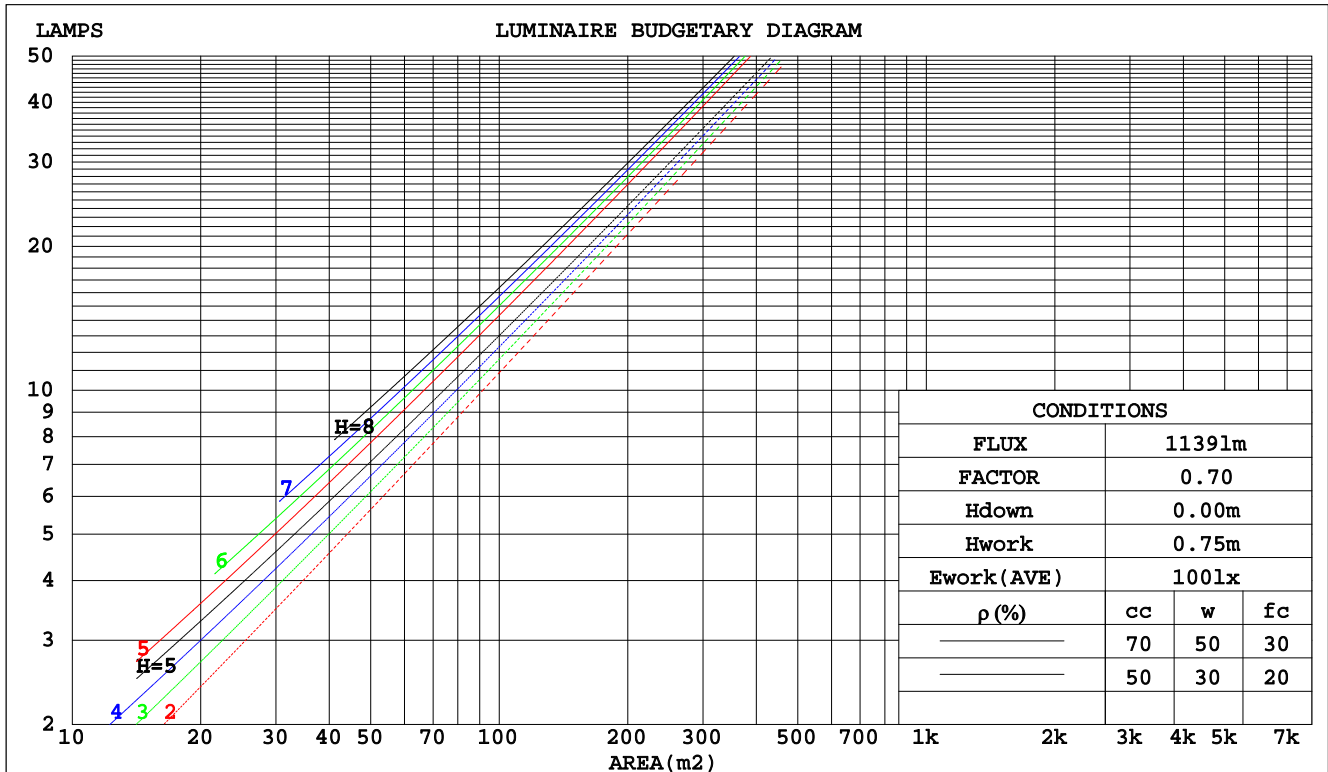
C Range: 0 - 360DEG
 C Interval: 15.0DEG
 Test Speed: HIGH
 Temperature: 25.3DEG
 Operators: Meng Yongjian
 Test Date: 2017-06-14

γ Range: 0 - 90DEG
 γ Interval: 1.0DEG
 Test System: EVERFINE GO-2000B_V1 SYSTEM V2.0.288
 Humidity: 52%
 Test Distance: 5.850m [K=1.0000]
 Remarks:

CU AND LUMINAIRE BUDGETARY ESTIMATE DIAGRAM

Test:U:220.7V I:0.0902A P:19.91W PF:0.9561 Lamp Flux:1139.05x1 lm		
NAME: FF6-FS2-17W-830-40D Black	TYPE:Downlight	SERIAL No.:
SPEC.:3000K	DIM.: L290mm*W45mm*H60mm	
MFR.:		

pcc	80%			70%			50%			30%			10%			0
pw	50%	30%	10%	50%	30%	10%	50%	30%	10%	50%	30%	10%	50%	30%	10%	0
pfc	20%			20%			20%			20%			20%			0
RCR	RCR:Room Cavity Ratio						Coefficients of Utilization(CU)									
0.0	1.19	1.19	1.19	1.16	1.16	1.16	1.11	1.11	1.11	1.06	1.06	1.06	1.02	1.02	1.02	.00
1.0	1.12	1.10	1.08	1.10	1.08	1.06	1.06	1.05	1.03	1.02	1.01	1.00	.99	.98	.97	.96
2.0	1.06	1.03	1.00	1.04	1.01	.99	1.01	.99	.97	.98	.96	.95	.96	.94	.93	.91
3.0	1.01	.97	.94	.99	.96	.93	.97	.94	.91	.95	.92	.90	.93	.90	.89	.87
4.0	.96	.92	.88	.95	.91	.88	.93	.90	.87	.91	.88	.86	.89	.87	.85	.84
5.0	.92	.87	.84	.91	.87	.83	.89	.86	.83	.88	.85	.82	.86	.84	.81	.80
6.0	.88	.83	.80	.87	.83	.80	.86	.82	.79	.85	.81	.79	.83	.80	.78	.77
7.0	.84	.80	.76	.84	.79	.76	.83	.79	.76	.82	.78	.75	.81	.77	.75	.74
8.0	.81	.76	.73	.81	.76	.73	.80	.76	.73	.79	.75	.72	.78	.75	.72	.71
9.0	.78	.73	.70	.78	.73	.70	.77	.73	.70	.76	.72	.70	.75	.72	.70	.68
10.0	.75	.71	.68	.75	.70	.68	.74	.70	.67	.73	.70	.67	.73	.69	.67	.66



C Range: 0 - 360DEG
 C Interval: 15.0DEG
 Test Speed: HIGH
 Temperature:25.3DEG
 Operators:Meng Yongjian
 Test Date:2017-06-14

γ Range: 0 - 90DEG
 γ Interval: 1.0DEG
 Test System:EVERFINE GO-2000B_V1 SYSTEM V2.0.288
 Humidity:52%
 Test Distance:5.850m [K=1.0000]
 Remarks:

WEC AND CCEC

Test:U:220.7V I:0.0902A P:19.91W PF:0.9561 Lamp Flux:1139.05x1 lm		
NAME: FF6-FS2-17W-830-40D Black	TYPE:Downlight	SERIAL No.:
SPEC.:3000K	DIM.: L290mm*W45mm*H60mm	
MFR.:		

pcc	80%			70%			50%			30%			10%			0
pw	50%	30%	10%	50%	30%	10%	50%	30%	10%	50%	30%	10%	50%	30%	10%	0
pfc	20%			20%			20%			20%			20%			0
RCR	RCR:Room Cavity Ratio						Wall Exitance Coefficients(WEC)									
0.0																
1.0	.151	.086	.027	.144	.082	.026	.132	.075	.024	.120	.069	.022	.110	.064	.020	
2.0	.141	.077	.024	.136	.075	.023	.125	.070	.022	.116	.065	.020	.107	.060	.019	
3.0	.132	.070	.021	.128	.068	.021	.119	.065	.020	.111	.061	.019	.104	.057	.018	
4.0	.125	.065	.019	.121	.063	.019	.114	.060	.018	.107	.057	.017	.100	.054	.017	
5.0	.118	.060	.017	.115	.059	.017	.108	.056	.017	.103	.054	.016	.097	.052	.016	
6.0	.112	.056	.016	.109	.055	.016	.104	.053	.015	.099	.051	.015	.094	.049	.015	
7.0	.107	.053	.015	.105	.052	.015	.100	.050	.015	.095	.049	.014	.091	.047	.014	
8.0	.102	.050	.014	.100	.049	.014	.096	.048	.014	.092	.047	.013	.088	.045	.013	
9.0	.098	.047	.013	.096	.047	.013	.092	.046	.013	.089	.044	.013	.085	.043	.013	
10.0	.094	.045	.013	.092	.045	.012	.089	.044	.012	.086	.043	.012	.083	.042	.012	

pcc	80%			70%			50%			30%			10%			0
pw	50%	30%	10%	50%	30%	10%	50%	30%	10%	50%	30%	10%	50%	30%	10%	0
pfc	20%			20%			20%			20%			20%			0
RCR	RCR:Room Cavity Ratio						Ceiling Cavity Exitance Coefficients(CCEC)									
0.0	.190	.190	.190	.163	.163	.163	.111	.111	.111	.064	.064	.064	.020	.020	.020	
1.0	.169	.158	.147	.145	.135	.126	.099	.093	.087	.057	.054	.051	.018	.017	.016	
2.0	.152	.133	.116	.130	.114	.100	.089	.079	.070	.051	.046	.041	.017	.015	.013	
3.0	.138	.113	.094	.118	.098	.081	.081	.068	.057	.047	.040	.034	.015	.013	.011	
4.0	.126	.098	.077	.108	.085	.067	.074	.059	.047	.043	.035	.028	.014	.011	.009	
5.0	.116	.086	.064	.100	.075	.056	.069	.052	.039	.040	.031	.023	.013	.010	.008	
6.0	.108	.076	.054	.093	.066	.047	.064	.046	.033	.037	.027	.020	.012	.009	.006	
7.0	.101	.068	.046	.087	.059	.040	.060	.042	.028	.035	.024	.017	.011	.008	.006	
8.0	.095	.062	.039	.081	.054	.034	.056	.038	.024	.033	.022	.014	.011	.007	.005	
9.0	.089	.056	.034	.077	.049	.030	.053	.034	.021	.031	.020	.013	.010	.007	.004	
10.0	.085	.052	.030	.073	.045	.026	.051	.032	.019	.029	.019	.011	.010	.006	.004	

C Range: 0 - 360DEG
C Interval: 15.0DEG
Test Speed: HIGH
Temperature:25.3DEG
Operators:Meng Yongjian
Test Date:2017-06-14

γ Range: 0 - 90DEG
γ Interval: 1.0DEG
Test System:EVERFINE GO-2000B_V1 SYSTEM V2.0.288
Humidity:52%
Test Distance:5.850m [K=1.0000]
Remarks:

UGR(Unified Glare Rating) Table

Test:U:220.7V I:0.0902A P:19.91W PF:0.9561 Lamp Flux:1139.05x1 lm										
NAME: FF6-FS2-17W-830-40D Black					TYPE:Downlight			SERIAL No.:		
SPEC.:3000K					DIM.: L290mm*W45mm*H60mm					
MFR.:										
ceiling/cavity	0.7	0.7	0.5	0.5	0.3	0.7	0.7	0.5	0.5	0.3
walls	0.5	0.3	0.5	0.3	0.3	0.5	0.3	0.5	0.3	0.3
working plane	0.2	0.2	0.2	0.2	0.2	0.2	0.2	0.2	0.2	0.2
Room dimensions	Viewed crosswise					Viewed endwise				
x = 2H y = 2H	5.4	6.1	5.6	6.3	6.4	4.9	5.6	5.1	5.8	6.0
3H	5.5	6.2	5.8	6.4	6.6	5.2	5.9	5.4	6.0	6.2
4H	5.6	6.2	5.8	6.4	6.6	5.2	5.9	5.5	6.1	6.3
6H	5.5	6.2	5.8	6.4	6.6	5.2	5.8	5.5	6.1	6.3
8H	5.5	6.1	5.8	6.4	6.6	5.2	5.8	5.5	6.0	6.3
12H	5.5	6.1	5.8	6.3	6.6	5.2	5.8	5.5	6.0	6.3
4H 2H	5.3	6.0	5.6	6.2	6.4	4.9	5.6	5.2	5.8	6.0
3H	5.6	6.1	5.9	6.4	6.7	5.2	5.8	5.6	6.1	6.4
4H	5.6	6.1	6.0	6.4	6.7	5.3	5.8	5.7	6.1	6.4
6H	5.6	6.1	6.0	6.4	6.8	5.4	5.8	5.7	6.2	6.5
8H	5.6	6.1	6.0	6.4	6.8	5.4	5.8	5.8	6.2	6.5
12H	5.6	6.0	6.0	6.4	6.7	5.4	5.8	5.8	6.1	6.5
8H 4H	5.6	6.0	5.9	6.3	6.7	5.3	5.7	5.7	6.0	6.4
6H	5.6	6.0	6.0	6.3	6.8	5.3	5.7	5.8	6.1	6.5
8H	5.6	5.9	6.0	6.3	6.8	5.4	5.7	5.8	6.1	6.5
12H	5.6	5.8	6.0	6.3	6.7	5.4	5.6	5.8	6.1	6.6
12H 4H	5.5	5.9	5.9	6.3	6.7	5.2	5.6	5.6	6.0	6.4
6H	5.6	5.9	6.0	6.3	6.7	5.3	5.6	5.8	6.0	6.5
8H	5.6	5.8	6.0	6.3	6.7	5.3	5.6	5.8	6.1	6.5
Variations with the observer position at spacings:										
S = 1.0H	+ 1.5 / - 1.4					+ 1.1 / - 1.3				
1.5H	+ 2.6 / - 1.2					+ 1.9 / - 1.0				
2.0H	+ 1.6 / - 0.9					+ 1.8 / - 0.8				

CIE Pub.117 Corrected 1139 lm Total Lamp Luminous Flux.(8log(F/F0) = 0.5)

C Range: 0 - 360DEG
 C Interval: 15.0DEG
 Test Speed: HIGH
 Temperature:25.3DEG
 Operators:Meng Yongjian
 Test Date:2017-06-14

γ Range: 0 - 90DEG
 γ Interval: 1.0DEG
 Test System:EVERFINE GO-2000B_V1 SYSTEM V2.0.288
 Humidity:52%
 Test Distance:5.850m [K=1.0000]
 Remarks:

UTILIZATION FACTORS TABLE

Test:U:220.7V I:0.0902A P:19.91W PF:0.9561 Lamp Flux:1139.05x1 lm		
NAME: FF6-FS2-17W-830-40D Black	TYPE:Downlight	SERIAL No.:
SPEC.:3000K	DIM.: L290mm*W45mm*H60mm	
MFR.:		

REFLECTANCE										
Ceiling	0.8	0.8	0.8	0.7	0.7	0.7	0.5	0.5	0.5	0
Walls	0.7	0.5	0.3	0.7	0.5	0.3	0.7	0.5	0.3	0
Working plane	0.2	0.2	0.2	0.2	0.2	0.2	0.2	0.2	0.2	0
ROOM INDEX	UTILIZATION FACTORS(PERCENT) $k(RI) \times RCR = 5$									
$k = 0.60$	90	84	81	90	84	81	89	84	81	77
0.80	97	92	88	97	91	88	95	91	88	85
1.00	101	96	93	100	95	92	99	95	92	88
1.25	105	100	97	104	99	96	102	98	96	92
1.50	107	103	100	106	102	99	104	101	98	94
2.00	109	106	103	108	105	102	105	103	100	95
2.50	111	107	105	109	106	104	106	104	102	96
3.00	112	109	107	111	108	106	107	105	103	97
4.00	114	112	110	112	110	108	109	107	106	99
5.00	116	113	112	113	112	110	110	108	107	100
ROOM INDEX	UF(total)									Direct
According to DIN EN 13032-2 2004			Suspended					SHRNOM = 1.25		

C Range: 0 - 360DEG
 C Interval: 15.0DEG
 Test Speed: HIGH
 Temperature:25.3DEG
 Operators:Meng Yongjian
 Test Date:2017-06-14

γ Range: 0 - 90DEG
 γ Interval: 1.0DEG
 Test System:EVERFINE GO-2000B_V1 SYSTEM V2.0.288
 Humidity:52%
 Test Distance:5.850m [K=1.0000]
 Remarks:

ISOCANDELA DIAGRAM

Test:U:220.7V I:0.0902A P:19.91W PF:0.9561 Lamp Flux:1139.05x1 lm		
NAME: FF6-FS2-17W-830-40D Black	TYPE:Downlight	SERIAL No.:
SPEC.:3000K	DIM.: L290mm*W45mm*H60mm	
MFR.:		

Conical surface Flux(90deg):

1119.8 lm

%lum = 98.3%

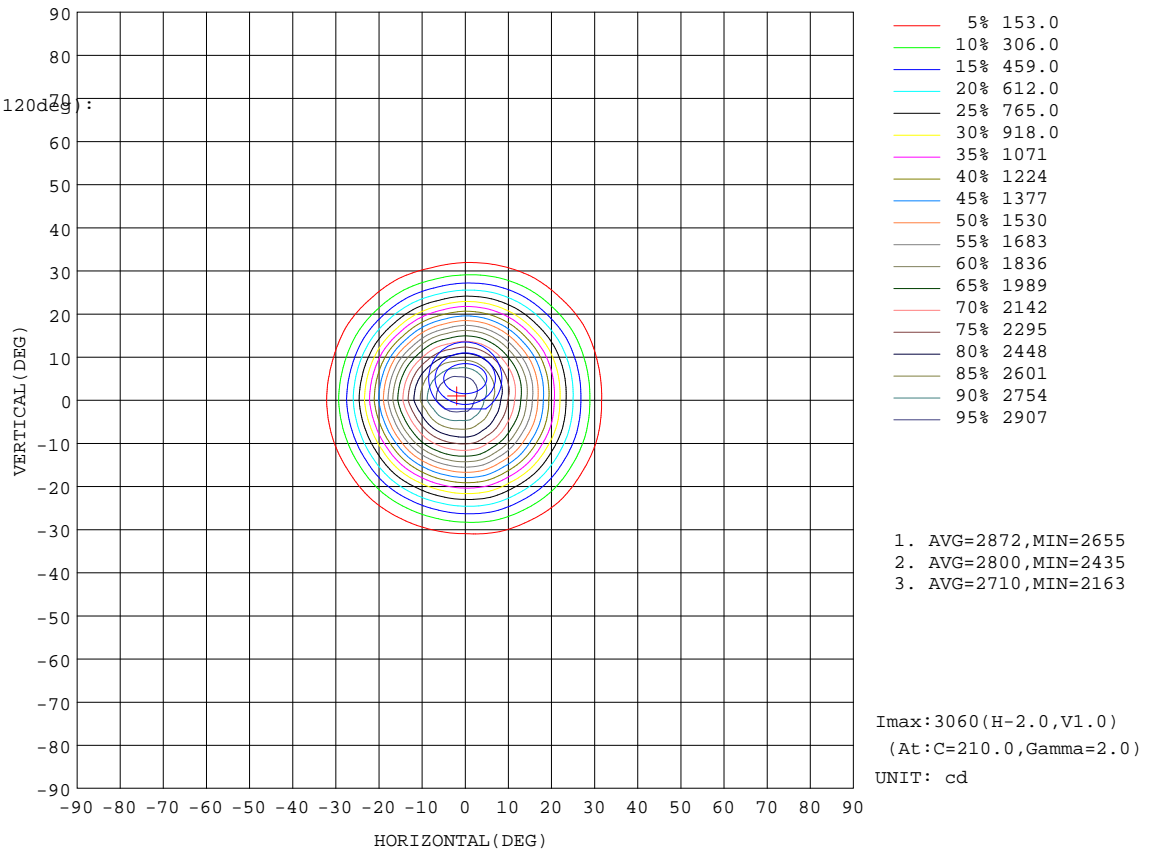
%lamp = 98.3%

Conical surface Flux(120deg):

1132.4 lm

%lum = 99.4%

%lamp = 99.4%

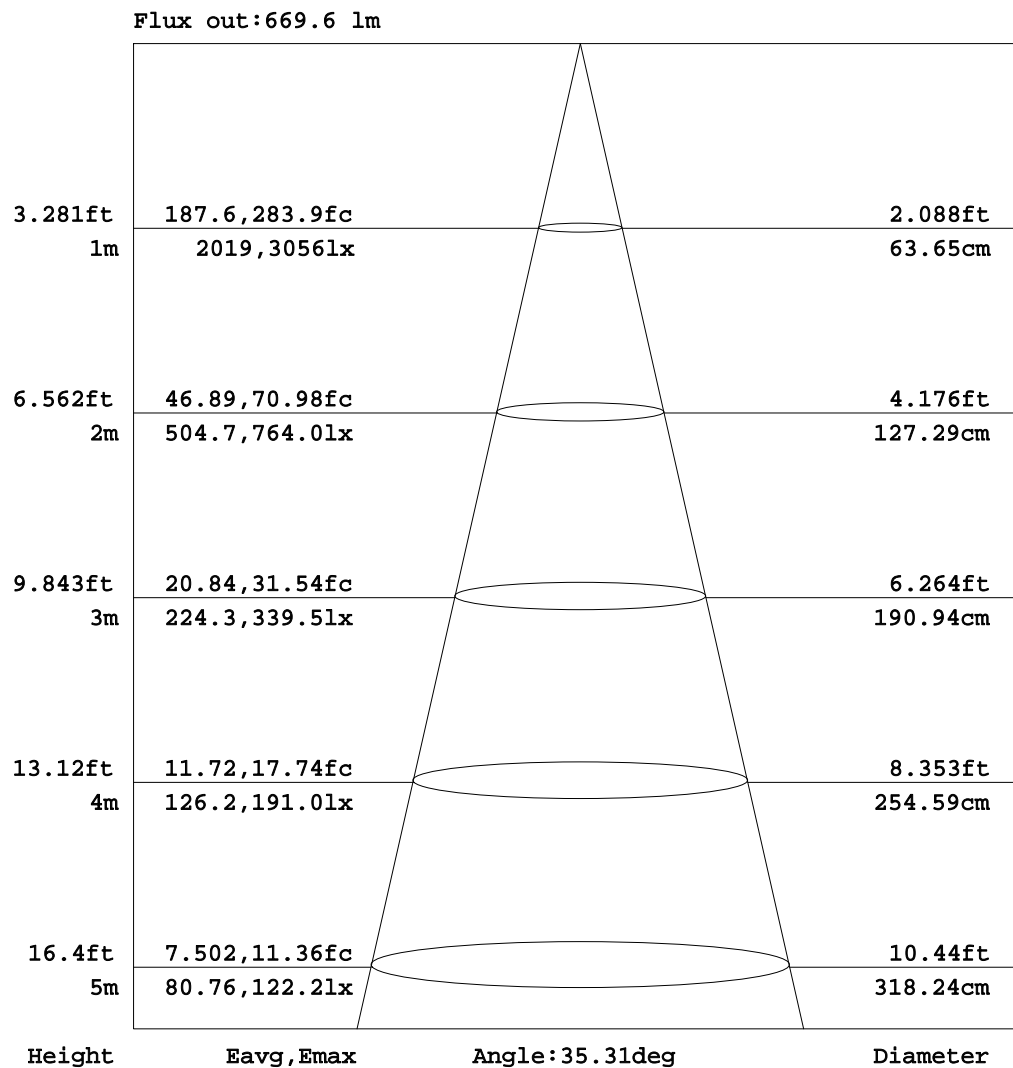


C Range: 0 - 360DEG
C Interval: 15.0DEG
Test Speed: HIGH
Temperature:25.3DEG
Operators:Meng Yongjian
Test Date:2017-06-14

γ Range: 0 - 90DEG
γ Interval: 1.0DEG
Test System:EVERFINE GO-2000B_V1 SYSTEM V2.0.288
Humidity:52%
Test Distance:5.850m [K=1.0000]
Remarks:

AAI Figure

Test:U:220.7V I:0.0902A P:19.91W PF:0.9561 Lamp Flux:1139.05x1 lm		
NAME: FF6-FS2-17W-830-40D Black	TYPE:Downlight	SERIAL No.:
SPEC.:3000K	DIM.: L290mm*W45mm*H60mm	
MFR.:		



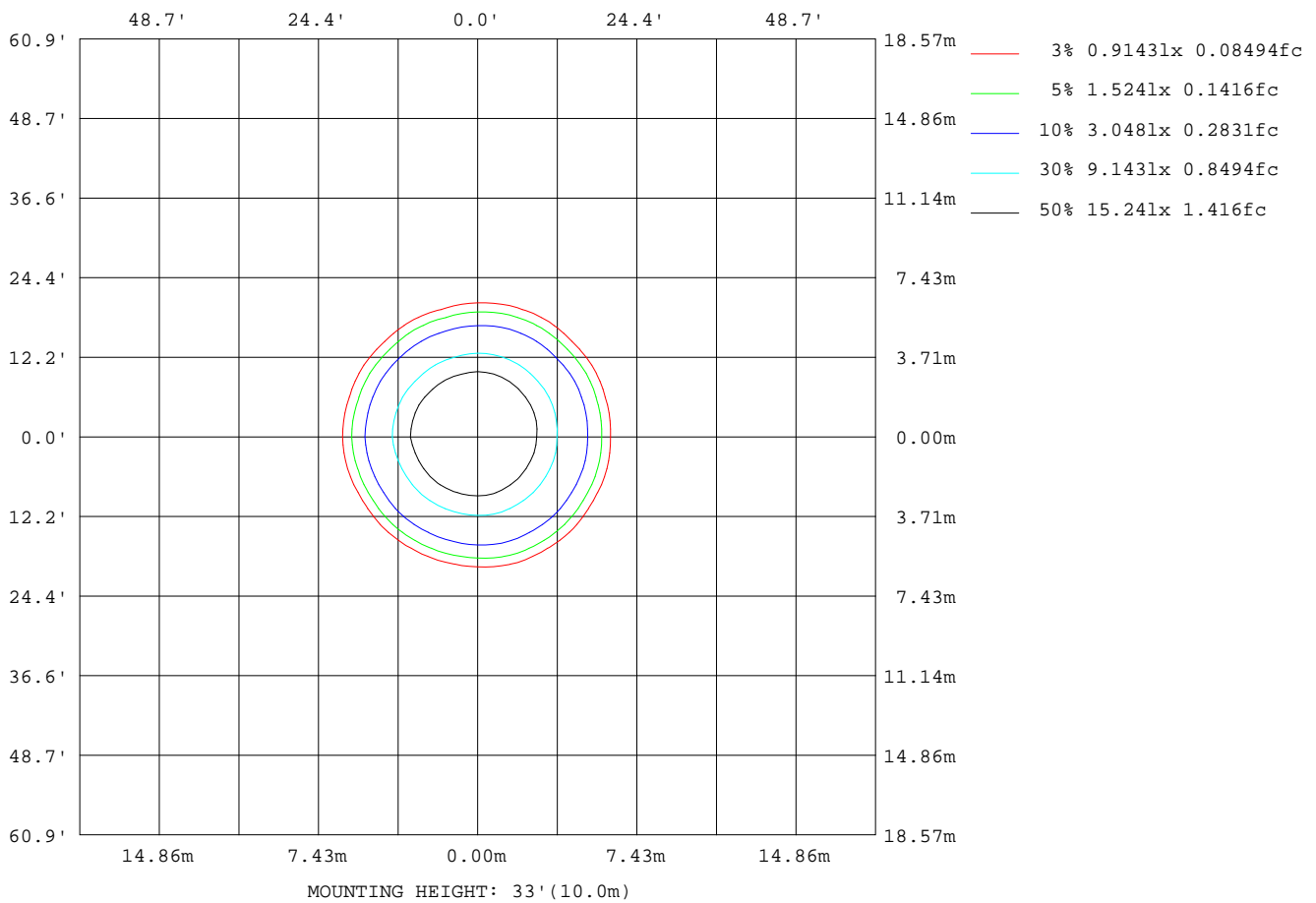
Note: The Curves indicate the illuminated area and the average illumination when the luminaire is at different distance.

C Range: 0 - 360DEG
C Interval: 15.0DEG
Test Speed: HIGH
Temperature: 25.3DEG
Operators: Meng Yongjian
Test Date: 2017-06-14

γ Range: 0 - 90DEG
γ Interval: 1.0DEG
Test System: EVERFINE GO-2000B_V1 SYSTEM V2.0.288
Humidity: 52%
Test Distance: 5.850m [K=1.0000]
Remarks:

ISOLUX DIAGRAM

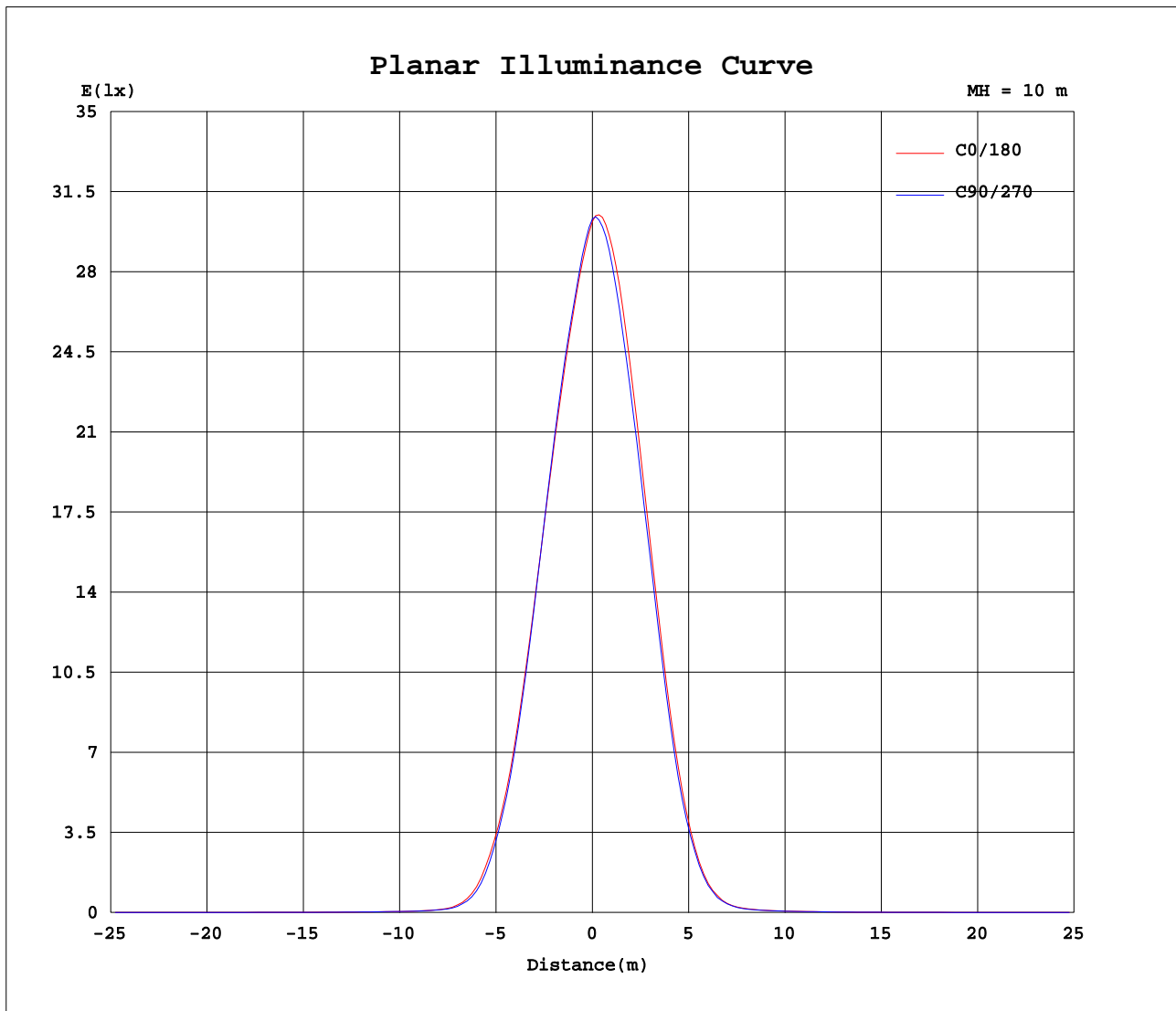
Test:U:220.7V I:0.0902A P:19.91W PF:0.9561 Lamp Flux:1139.05x1 lm		
NAME: FF6-FS2-17W-830-40D Black	TYPE:Downlight	SERIAL No.:
SPEC.:3000K	DIM.: L290mm*W45mm*H60mm	
MFR.:		



C Range: 0 - 360DEG
 C Interval: 15.0DEG
 Test Speed: HIGH
 Temperature: 25.3DEG
 Operators: Meng Yongjian
 Test Date: 2017-06-14

γ Range: 0 - 90DEG
 γ Interval: 1.0DEG
 Test System: EVERFINE GO-2000B_V1 SYSTEM V2.0.288
 Humidity: 52%
 Test Distance: 5.850m [K=1.0000]
 Remarks:

Planar Illuminance Curve



C Range: 0 - 360DEG
C Interval: 15.0DEG
Test Speed: HIGH
Temperature: 25.3DEG
Operators: Meng Yongjian
Test Date: 2017-06-14

γ Range: 0 - 90DEG
 γ Interval: 1.0DEG
Test System: EVERFINE GO-2000B_V1 SYSTEM V2.0.288
Humidity: 52%
Test Distance: 5.850m [K=1.0000]
Remarks:

LUMINOUS DISTRIBUTION INTENSITY DATA

Test:U:220.7V I:0.0902A P:19.91W PF:0.9561 Lamp Flux:1139.05x1 lm		
NAME: FF6-FS2-17W-830-40D Black	TYPE:Downlight	SERIAL No.:
SPEC.:3000K	DIM.: L290mm*W45mm*H60mm	
MFR.:		

UNIT: cd

[illegible]

```

γ Range: 0 - 90DEG
γ Interval: 1.0DEG
Test System:EVERFINE GO-2000B_V1 SYSTEM V2.0.288
Humidity:52%
Test Distance:5.850m [K=1.0000]
Remarks:

```

LUMINOUS DISTRIBUTION INTENSITY DATA

Test:U:220.7V I:0.0902A P:19.91W PF:0.9561 Lamp Flux:1139.05x1 lm		
NAME: FF6-FS2-17W-830-40D Black	TYPE:Downlight	SERIAL No.:
SPEC.:3000K	DIM.: L290mm*W45mm*H60mm	
MFR.:		

Table--2

UNIT: cd

[illegible]

C Range: 0 - 360DEG
C Interval: 15.0DEG
Test Speed: HIGH
Temperature: 25.3DEG
Operators: Meng Yongjian
Test Date: 2017-06-14

```

γ Range: 0 - 90DEG
γ Interval: 1.0DEG
Test System:EVERFINE GO-2000B_V1 SYSTEM V2.0.288
Humidity:52%
Test Distance:5.850m [K=1.0000]
Remarks:

```

Photometric Data Table [cd]

G/C	0.0	15.0	30.0	45.0	60.0	75.0	90.0	105.0	120.0	135.0
0.0	3020	3024	3024	3032	3032	3038	3031	3024	3025	3026
3.0	2849	2843	2840	2851	2856	2883	2880	2886	2916	2949
6.0	2631	2623	2612	2624	2621	2649	2657	2667	2714	2765
9.0	2376	2362	2347	2362	2360	2398	2408	2420	2459	2519
12.0	2082	2065	2042	2055	2056	2099	2102	2119	2156	2208
15.0	1748	1732	1705	1714	1712	1751	1747	1757	1790	1845
18.0	1389	1384	1359	1363	1351	1380	1368	1364	1398	1452
21.0	1028	1033	1006	1008	991.7	1013	995.9	986.8	1009	1058
24.0	702.7	705.7	683.2	687.6	673.3	686.7	665.2	657.5	674.2	710.4
27.0	443.6	445.2	429.8	432.8	419.9	425.5	403.8	390.5	397.9	423.4
30.0	234.2	236.7	225.0	228.5	220.6	219.7	198.6	190.6	198.0	209.2
33.0	104.4	103.7	99.68	99.06	95.95	94.65	86.53	82.13	87.88	94.19
36.0	44.54	45.29	43.06	42.31	40.85	41.41	38.25	37.38	40.65	44.16
39.0	24.79	24.74	23.87	24.28	23.79	24.19	23.28	23.39	24.89	26.45
42.0	17.44	17.27	16.93	17.04	16.97	17.22	17.00	17.20	18.07	18.91
45.0	14.17	14.05	13.94	14.25	14.11	14.51	14.30	14.50	15.22	15.87
48.0	11.60	11.55	11.39	11.73	11.72	12.07	12.00	12.24	12.97	13.59
51.0	9.170	9.015	8.948	9.245	9.106	9.328	9.294	9.520	10.24	10.89
54.0	7.292	7.155	7.097	7.237	7.124	7.240	7.194	7.356	7.791	8.227
57.0	6.093	6.015	5.953	6.006	6.038	6.170	6.132	6.240	6.419	6.631
60.0	5.266	5.160	5.095	5.164	5.200	5.295	5.246	5.376	5.552	5.676
63.0	4.413	4.357	4.293	4.384	4.431	4.501	4.459	4.567	4.737	4.836
66.0	3.637	3.608	3.571	3.656	3.643	3.752	3.711	3.809	3.952	4.054
69.0	2.873	2.844	2.821	2.873	2.873	2.985	2.996	3.061	3.184	3.319
72.0	2.003	2.001	1.966	1.990	2.013	2.198	2.288	2.299	2.454	2.601
75.0	1.333	1.328	1.333	1.352	1.379	1.418	1.443	1.464	1.573	1.834
78.0	0.9612	0.9546	0.9677	0.9830	1.016	1.044	1.073	1.086	1.184	1.241
81.0	0.6352	0.6244	0.6439	0.6528	0.6876	0.7075	0.7401	0.7469	0.8386	0.8868
84.0	0.3358	0.3249	0.3445	0.3489	0.3882	0.4080	0.4429	0.4473	0.5369	0.5763
87.0	0.1186	0.0981	0.1122	0.0916	0.1169	0.1285	0.1716	0.1722	0.2547	0.2858
90.0	0.0568	0.0568	0.0590	0.0568	0.0568	0.0547	0.0547	0.0547	0.0918	0.1071
G/C	150.0	165.0	180.0	195.0	210.0	225.0	240.0	255.0	270.0	285.0
0.0	3024	3018	3020	3024	3024	3032	3032	3038	3031	3024
3.0	2982	3007	3050	3058	3056	3049	3043	3020	3009	2996
6.0	2831	2874	2948	2956	2960	2939	2925	2884	2866	2850
9.0	2579	2635	2740	2741	2734	2699	2680	2632	2626	2609
12.0	2253	2326	2437	2437	2422	2381	2365	2325	2331	2316
15.0	1889	1964	2072	2071	2054	2015	2009	1968	1982	1970
18.0	1492	1567	1670	1663	1656	1606	1602	1572	1597	1584
21.0	1088	1152	1239	1232	1223	1170	1168	1147	1173	1172
24.0	725.9	773.7	838.6	825.7	817.3	777.8	776.2	753.6	779.2	790.5
27.0	430.5	466.3	507.6	494.3	491.3	468.0	467.4	452.7	471.8	489.8
30.0	214.2	236.7	261.9	251.6	251.9	237.6	240.0	229.7	245.6	261.2
33.0	98.89	110.9	125.9	116.8	116.5	109.6	109.4	106.4	111.4	119.7
36.0	47.29	53.53	57.48	59.18	57.45	53.42	52.80	51.52	54.36	55.26
39.0	28.03	31.71	34.62	34.77	34.34	32.50	32.16	31.09	31.21	31.19
42.0	19.85	21.45	23.51	23.68	23.54	23.04	22.72	22.28	22.25	21.76
45.0	16.28	17.15	18.35	18.72	18.86	18.72	18.37	18.04	17.73	17.54
48.0	13.87	14.46	15.21	15.43	15.63	15.57	15.37	14.96	14.78	14.69
51.0	11.28	11.75	12.24	12.28	12.61	12.31	12.29	11.81	11.64	11.42
54.0	8.633	9.116	9.384	9.292	9.421	9.203	9.089	8.760	8.714	8.496
57.0	6.875	7.126	7.354	7.187	7.247	7.069	7.128	7.011	6.990	6.967
60.0	5.815	6.001	6.120	6.054	6.099	5.965	6.108	6.017	5.977	6.028
63.0	4.965	5.098	5.226	5.219	5.281	5.189	5.268	5.163	5.106	5.121
66.0	4.179	4.318	4.405	4.484	4.515	4.403	4.473	4.351	4.320	4.288
69.0	3.422	3.592	3.653	3.734	3.701	3.618	3.655	3.562	3.579	3.518
72.0	2.710	2.866	2.918	2.884	2.898	2.858	2.837	2.817	2.813	2.721
75.0	1.916	2.089	2.073	2.007	1.996	2.001	1.854	1.695	1.686	1.752
78.0	1.304	1.355	1.381	1.387	1.376	1.361	1.319	1.278	1.234	1.223
81.0	0.9523	0.9938	1.020	1.035	1.020	1.002	0.9585	0.9214	0.8776	0.8711
84.0	0.6354	0.6681	0.6875	0.7094	0.6875	0.6766	0.6306	0.6001	0.5541	0.5520
87.0	0.3487	0.3732	0.3839	0.4054	0.3816	0.3747	0.3270	0.3070	0.2658	0.2676
90.0	0.1334	0.1465	0.1574	0.1618	0.1356	0.1246	0.0875	0.0612	0.0437	0.0525
G/C	300.0	315.0	330.0	345.0						
0.0	3025	3026	3024	3018						
3.0	2974	2949	2917	2884						
6.0	2816	2777	2732	2687						
9.0	2572	2527	2478	2441						
12.0	2274	2228	2186	2145						
15.0	1926	1873	1848	1811						
18.0	1548	1499	1480	1441						
21.0	1151	1114	1106	1070						

C Range: 0 - 360DEG

C Interval: 15.0DEG

Test Speed: HIGH

Temperature: 25.3DEG

Operators: Meng Yongjian

Test Date: 2017-06-14

γ Range: 0 - 90DEG

γ Interval: 1.0DEG

Test System: EVERFINE GO-2000B_V1 SYSTEM V2.0.288

Humidity: 52%

Test Distance: 5.850m [K=1.0000]

Remarks:

Photometric Data Table [cd]

24.0	783.6	759.5	762.9	733.5
27.0	491.3	474.2	480.5	461.3
30.0	266.0	255.4	259.2	245.2
33.0	126.5	114.2	115.2	109.0
36.0	53.59	51.53	51.24	47.55
39.0	30.16	28.12	27.13	25.60
42.0	21.15	19.83	19.10	18.12
45.0	17.10	16.30	15.30	14.52
48.0	14.12	13.32	12.57	11.85
51.0	10.96	10.33	9.907	9.438
54.0	8.345	8.002	7.724	7.400
57.0	6.790	6.519	6.383	6.160
60.0	5.863	5.637	5.489	5.296
63.0	4.979	4.830	4.663	4.465
66.0	4.158	4.047	3.885	3.649
69.0	3.370	3.181	3.075	2.862
72.0	2.361	2.215	2.156	2.048
75.0	1.694	1.490	1.428	1.352
78.0	1.136	1.085	1.029	0.9805
81.0	0.7903	0.7508	0.6941	0.6611
84.0	0.4776	0.4448	0.3902	0.3639
87.0	0.1894	0.1735	0.1372	0.1361
90.0	0.0437	0.0437	0.0415	0.0415

C Range: 0 - 360DEG
C Interval: 15.0DEG
Test Speed: HIGH
Temperature: 25.3DEG
Operators: Meng Yongjian
Test Date: 2017-06-14

γ Range: 0 - 90DEG
γ Interval: 1.0DEG
Test System: EVERFINE GO-2000B_V1 SYSTEM V2.0.288
Humidity: 52%
Test Distance: 5.850m [K=1.0000]
Remarks: